

LIGONIEL



Primary School

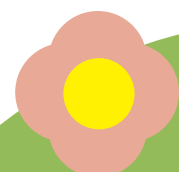
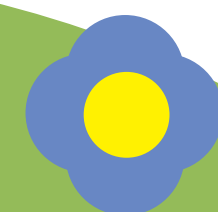
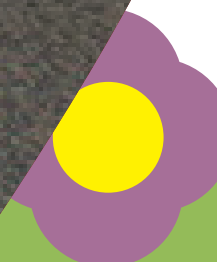
# LIGONIEL PRIMARY SCHOOL PROSPECTUS





# CONTENTS

Principal's Welcome	Page 1
All About Us	Page 3
Our Mission Statement	Page 4
Our Vision Statement	Page 4
Pastoral Care	Page 5
Discipline	Page 5
Special Educational Needs	Page 5
The School Day	Page 6
Uniform	Page 6
School Meals	Page 8
Curriculum	Page 10
Applications	Page 12
Your Child's Progress	Page 12
Homework	Page 12





# PRINCIPAL'S WELCOME



Dear Parent/Guardian,

We hope this booklet will be interesting and informative. It has been compiled to help you get to know more about our school, our curriculum and how we are organised.

We work hard to provide a caring, friendly environment and a wide range of learning opportunities. Our experienced and dedicated staff strive to provide high standards of teaching and learning where all children can fulfil their potential. Our numbers have grown steadily over the last fifteen years which demonstrates the support and regard for our school in the community.

We are proud of the strong links between home and school and we believe that parents are our partners in the education of our children. We hope you and your children will enjoy being part of our school.

Yours sincerely,

*Lynsey Stewart*

Principal





# ALL ABOUT US

Ligoniel Primary School is a co-educational primary school controlled by the Education Authority.

The building was opened in 1967 and it replaced two small schools: St. Mark's and Wolfhill.

The school is on an elevated site and each classroom enjoys views over Belfast and County Down. The grounds include a large hard surface playground marked out for games and extensive grassy areas.

The staffing for the school is a Principal plus seven full-time teachers and eleven classroom assistants. The school is committed to the well-being of its pupils

and pays particular attention to the special needs of pupils.

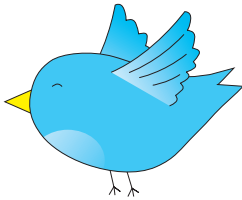
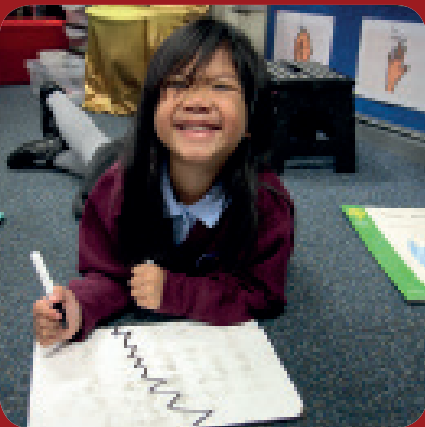
The current enrolment of 180 is organised in seven classes.

The attendance rate for last year was 95.5%.

The school is noted for its friendly atmosphere where children are valued and parents are welcome. There are regular opportunities for parents to discuss their children's

progress as well as invitations to attend school activities.

The Principal is available to answer queries or to discuss the children's progress.



# OUR MISSION STATEMENT

In Ligoniel Primary School we care,

we value, we aim to provide the best,

Providing an environment where children, staff & parents feel happy and valued,

Providing a broad education with high levels of expectation leading children to achieve their best,

Preparing children with appropriate life skills

to take their place in future society.

# OUR VISION STATEMENT

In Ligoniel Primary School we share the vision that each child will:

Succeed in their potential;

academic, social, moral, spiritual and physical,

Have aspirations for their future,

Be happy and secure individuals who respect themselves and others, contribute to the community.

We value the partnership which exists between school, parents and community and the part it plays in realising this vision.

Through working towards achieving our vision Ligoniel Primary School will become a school of excellence in North Belfast.

# PASTORAL CARE

As part of a team, we have a caring commitment to guide and advise our pupils, both formally and informally, on personal and educational matters. We prioritise Child Protection and Pastoral Care

along with the health and well-being of all those involved with the school. Our Designated Teacher for Child Protection is Mrs Young and Deputy Designated Teacher is Mr Kirkwood.



P4-P7 pupils have the opportunity to be elected as a member of the School Council and the ECO Council. P6 and P7 pupils have the opportunity to be helpers in the following areas: playground buddies, reading buddies, digital buddies and secretarial buddies.

## DISCIPLINE

In Ligoniel Primary School, discipline is approached positively with praise, encouragement and incentives having a higher priority than sanctions. Our core values are respect, perseverance, teamwork, self-discipline, giving, compassion, honesty and responsibility. When nurtured and reinforced by all in the school community, these core values form the basis of a happy and productive school environment. We expect all parents and guardians to support our positive yet firm approach to discipline.

## SPECIAL EDUCATIONAL NEEDS

We seek to integrate all children, regardless of physical, academic or emotional needs, into the life and activities of the school. We currently have a teacher and classroom assistant for pupils with Special Educational Needs, who work with children in small groups or as individual Education Plans.

# THE SCHOOL DAY

8.05am	Breakfast club starts
8.30am	Children gather in the playground - supervision begins
8.40am	Children enter the school building
8.45	Lessons begin
BREAK	
10.25-10.40am	Key Stage 2 break
10.45-11.00am	Foundation and Key Stage 1 break
LUNCH	
12.00-12.45pm	Foundation and Key Stage 1 lunch
12.25-1.15pm	Key Stage 2 lunch
2.00pm	Y1-3 pupils finish school
3.00pm	Y4-7 pupils finish school

All pupils finish early on a Friday. Pupils with no siblings finish at 1.45pm and those with brothers and sisters finish at 2.00pm.

# UNIFORM



The Ligoniel school uniform is -Y1 - Y3  
- maroon sweatshirt or cardigan, light blue polo shirt, grey trousers, grey skirt or pinafore

Y4 - Y7 - maroon cardigan or V-neck jumper, blue shirt, school tie, grey trousers, grey skirt or pinafore

P.E. Kit - white T-shirt, black shorts, black P.E. pumps

Summer Term - blue gingham dress black or grey shorts

(no stripes or logos)

Uniforms can be purchased from Kay's Corner on the Shankill Road.



At Ligoniel we consider the partnership between home and school to be very important.

Parents are welcome in the school and if children are unhappy or experiencing difficulties then please contact the school immediately.

The school has a Parent Teacher Association which meets regularly.

New members are always welcome.

## SCHOOL MEALS

School dinners are available for children who wish to have them. The correct amount of money should be sent to the class teacher at the beginning of the week.

The cost is currently £2.60 each day.

Please take advantage of free meals if your child is entitled to them.

Application forms can be obtained from the school office and when completed should be sent to the Education Authority Free Meals Section.

Your child may bring a healthy packed lunch.

## BREAKFAST CLUB

A Breakfast Club runs from 8.05 - 8.40 each morning. Children can choose from a healthy range of breakfast foods. A nominal charge applies.

## MID-MORNING BREAK

The school operates a Healthy Break Policy. A small charge is made at the Drinks such as milk or sugar-free juice are acceptable.

Crisps, chocolate or fizzy drinks are not acceptable, or products with added sugars.





## CURRICULUM

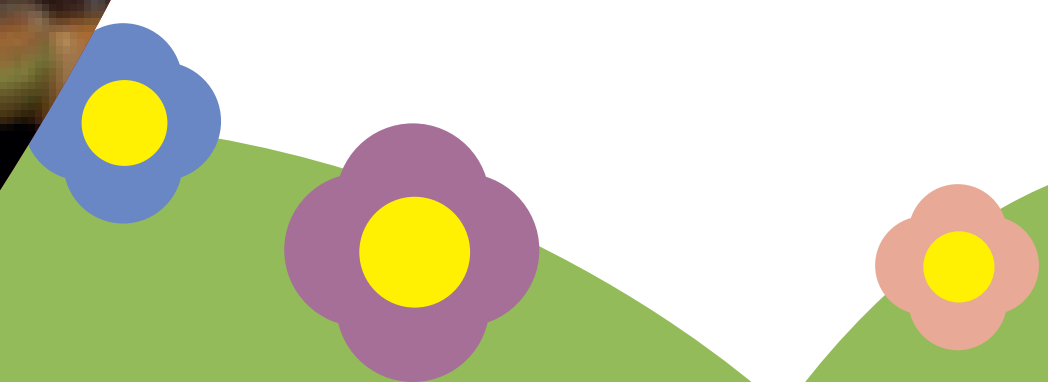
Ligoniel Primary School offers a broad and balanced education which complies with the Northern Ireland Curriculum. This is enhanced by a programme of educational visits, contacts with the wider community and activity afternoons which include e.g. drama, games, art, technology, French, first aid, Eco and many more.

Children are taught in a variety of ways. These include small group activities, working in pairs or independently. There are excellent facilities for PE and computer studies with an interactive whiteboard in each class and iPads used regularly for research, presentation and educational gain.

The children take part in regular sports activities.

Children who have special educational needs will receive additional support in the form of an individual educational plan and in some cases advice will be sought from the EA educational psychology service.

We are very proud of all our children and congratulations go to the pupils of our Year 7 class who this year have gained places at Belfast Royal Academy, Victoria College, Boys' Model School, Girls' Model School and Hazelwood College.





# APPLICATIONS



Parents are invited to visit the school on the Open Day or make an appointment with the Principal.  
Application is online via the Education Authority website. The number of applications for admission in recent years were:

	Application	Admission
2016	29	24
2017	25	24
2018	23	22

There will be a meeting for new intake parents and children in June, if you have applied then a letter will be sent out to inform you of the date.

# YOUR CHILD’S PROGRESS

We encourage parents to take an active interest in their child’s progress at school. Your child will receive a written progress report in the summer term. In the autumn term we arrange individual parent/teacher interviews where your child’s progress is discussed in detail.  
It also provides an opportunity for both you and the teacher to discuss any concerns you may have regarding your child. You can also arrange to see the teacher on request.

# HOMEWORK

Homework is given to all classes and should take no more than:

Y1	10 minutes
Y2 & Y3	10-15 minutes
Y4 & Y5	20 minutes
Y6 & Y7	30 minutes

Homework is set to reinforce class work and help parents to be involved in their child’s education.







ligonielpriaryschool

LIGONIEL PRIMARY SCHOOL  
LIGONIEL ROAD  
BELFAST  
BT148BW  
02890391502

[www.ligonielps.co.uk](http://www.ligonielps.co.uk)